

Caterpillar belts for pipes and profiles - retreaded

Initial situation

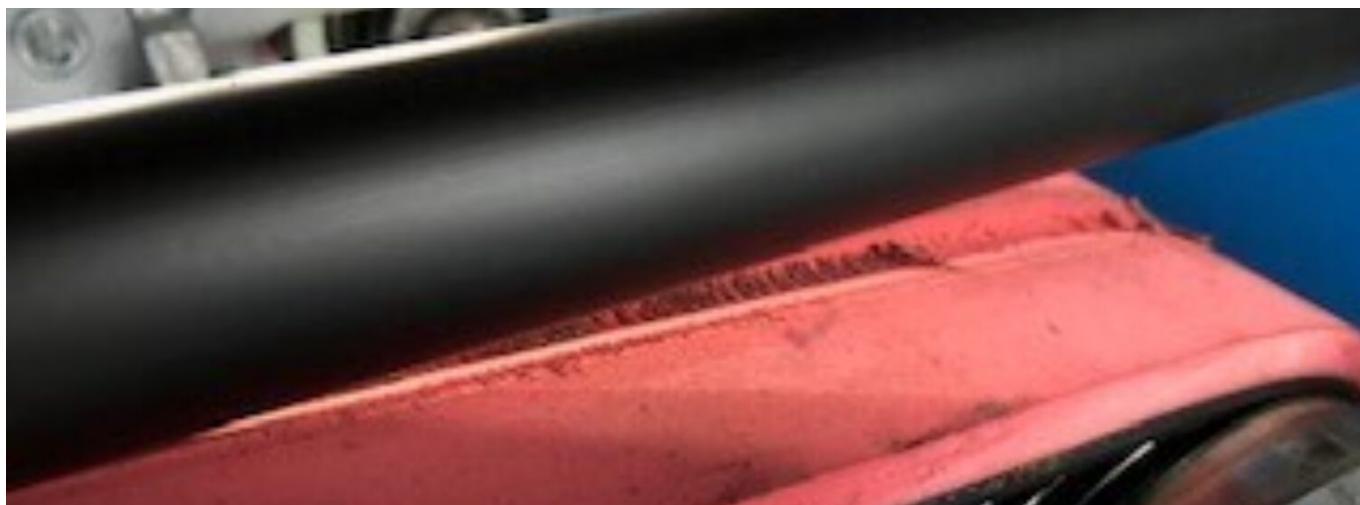
A leading manufacturer of drawn shaped steel tubes supplies the most important automotive, furniture and building service industries with its quality products. From the production perspective, caterpillar haul-off belts have a crucial role in terms of the resulting production quality and safety. Any slippage on the belt, either on the run or on the load side, will cause rejects, either punctually on the pipe or on the entire length produced. For many decades, the manufacturer has relied on our high quality in the field of caterpillar haul-off belts.

Task

Due to the close contact of the production manager to the engineering team of the Dipl. Ing. Werner Graf AG and the mutual exchange of future goals, an even more economical plant operation with our haul-off belts should be ensured. The technically necessary abrasion on the haul-off belt represents a significant cost in the production of shaped steel tubes. Savings in quality are out of discussion.

Solution

The supporting element to be coated, a poly-V belt, is subject to far less wear in the present production process than our high quality endless coating. Now, in coordination and well planned trials, the poly-V belt can be reused multiple times as the worn coating is abraded and new vulcanized. The resulting and proven customer savings achieving to several thousand Euros per year.



Dipl. Ing. Werner Graf AG
Buechenstrasse 9 | CH-9422 Staad
Tel. +41 71 868 60 60
www.grafbelts.ch | info@grafbelts.ch



Kontakt:
André Rohm
Verkaufsingenieur
andre.rohm@grafbelts.ch